



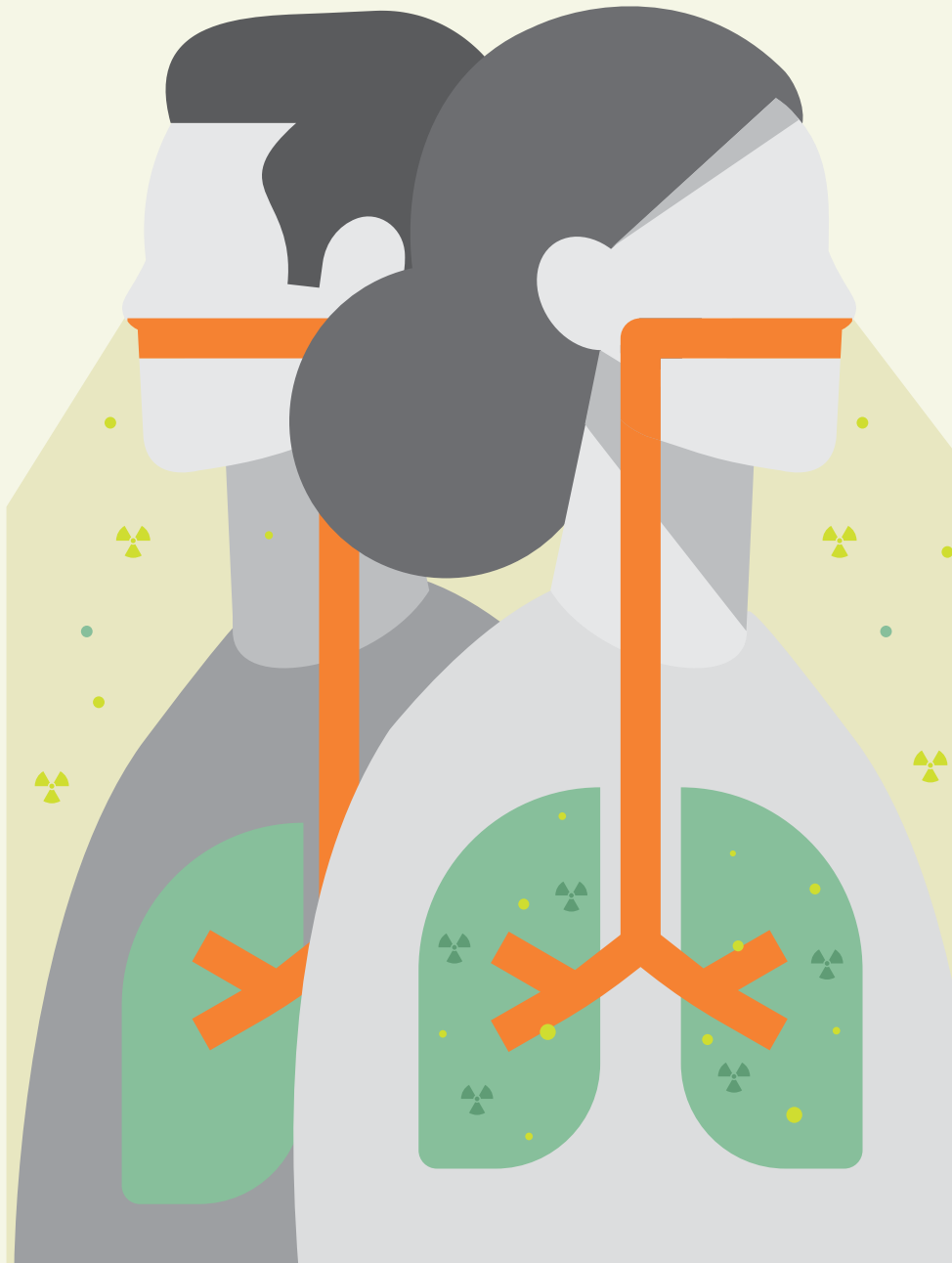
LE GOUVERNEMENT
DU GRAND-DUCHÉ DE LUXEMBOURG
Ministère de la Santé

Direction de la santé

LU^XEMBOURG
LET'S MAKE IT HAPPEN



2nd Annoucement ROOMS 2023





This year, the ROOMS (Radon Outcomes On Mitigation Solutions) meeting will take place in **Luxembourg City from 10th to 11th October 2023**, focusing on radon remediation in specific conditions.

The European Radon Association (ERA) in collaboration with the Radiation Protection Department (DRP) from the Health Directorate of Luxembourg welcomes the participation of national and international members of the scientific radon community.

ROOMS is an informal workshop that aims to exchange information on solutions to radon problems in buildings.



Main topics are:

- Building protection measurements: prevention, diagnosis, remediation
- Radon remediation in specific conditions: waterworks, special workplaces, public buildings
- Impact of changes in building techniques or energy retrofit: low-energy building, etc.
- All other topics that could be linked to these.

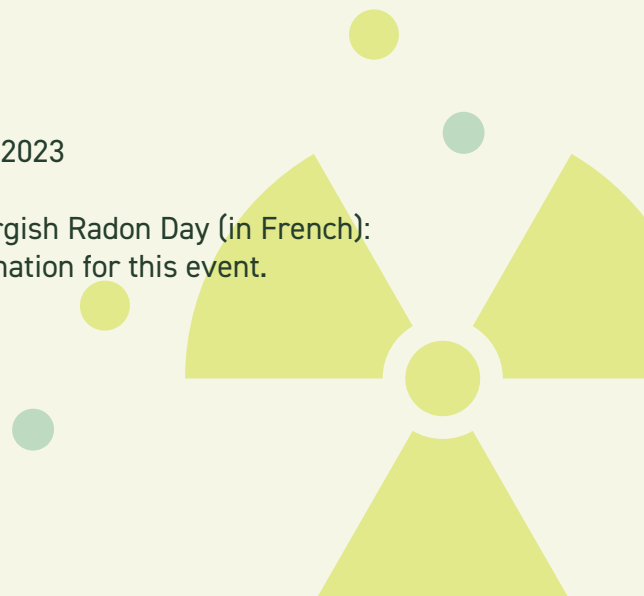
Important deadlines!

Abstract submission: 20th August 2023

Registration: 10th September 2023

Preliminary reserved hotel rooms: 29th August 2023

This workshop will be followed by a Luxembourgish Radon Day (in French):
Please indicate your interest in receiving information for this event.





Who?

National and international members of the scientific community, radon testers, diagnosticians, mitigators, educators, public stakeholders, business people and authorities.

What?

This conference is dedicated to radon prevention and mitigation measures in new and existing buildings with an emphasis on specific conditions i.e. water-works, etc.

When?

10th and 11th october 2023

Where?

[Parc Hotel Alvisse \(parc-hotel.lu\)](http://parc-hotel.lu)

120 Rte d'Echternach, 1453 Luxembourg

How to get there?

Book your accommodation and transport yourself and in advance.
The meeting is located in [Parc Hotel Alvisse \(parc-hotel.lu\)](http://parc-hotel.lu).

Travel tips:

Get travel information at <https://www.luxembourg-city.com/en>

Plan your trip with <https://www.mobiliteit.lu/en/>

Public transport is free of charge in Luxembourg

From the airport:

Bus 16 to “Fondation Pescatore” station and take the bus 221

From the railway station:

Tram to “Hamilius” station and walk to “Badeanstalt” station

From the city center:

Bus 221 “Fondation Pescatore” station or
“Badeanstalt”station“ to “Duschbuer” station





Preliminary program

Tuesday 10th October 2023

Parc Hotel Alvisse

09h00	Registration + Coffee
09h45	Welcome
10h00	Presentation 1
10h30	Presentation 2
11h00	Presentation 3
11h30-12h00	Roundtable
12h00-13h00	Lunch
13h00	Presentation 4
13h30	Presentation 5
14h00	Presentation 6
14h30-15h00	Roundtable
15h00-15h30	Coffee break
15h30	Presentation 7
16h00	Presentation 8
16h30	Presentation 9
17h00-17h30	Roundtable
19h00	Dinner Parc Hotel Alvisse

Wednesday 11th October 2023

Parc Hotel Alvisse - SES -
Luxembourg City

09h00	Coffee
09h30	Presentation 10
10h00	Presentation 11
10h30	Presentation 12
11h00-11h30	Roundtable
11h30	End of the meeting: <i>conclusions</i>
	<i>information for the afternoon</i>
	<i>ROOMS 2024</i>
11h45-13h00	Lunch
13h15	Departure (<i>Bus</i>)
14h00-16h00	Visit SES Koerich
16h15	Departure (<i>Bus</i>)
17h00-19h00	Free time
19h00-22h00	Restaurant in Luxembourg City
22h30	Departure (<i>Bus</i>) <i>Luxembourg City to Parc Hotel Alvisse</i>

**Exhibitors are welcome. Space is provided for displaying equipment.
Time for presentation during the workshop is foreseen.**

This program also includes an excursion to the Syndicat des Eaux du Sud (SES) in Koerich with a visit of its facilities and presentation on how they have solved the radon problem. (*Limited to 50 persons*)

SES is a syndicate that aims to supply drinking water to the reservoirs of the communes belonging to the syndicate. (*see further details below*)



Hotel reservation in Luxembourg City

Room charges are borne by the participants.

Preferential price in [Parc Hotel Alvisse \(parc-hotel.lu\)](http://parc-hotel.lu)
(also meeting location)

Prices : Single room 108€, double room 128€.
(Price guaranteed until 29th August 2023)

During your stay, you will have free access to the wellness center & wifi. The breakfast buffet is included in the room prices. Please find below the instructions for room reservations.

- Secured online booking by this link :
<https://reservations.cubilis.eu/alvisse-parc-hotel-luxembourg>
- By clicking on the link you will be directed to the booking page
- Fill in the arrival and departure date (between 10th and 12th of October 2023) and the special discount code **ROOM2023**. Click on « Show Availability », without the date and code, your special rates will not be visible!
- Then choose your room number of persons and number of rooms (the price will be adjusted according to the number of people)
- Please book before the 29th of August 2023, all non-booked rooms after this date will be automatically released. Rooms can be still booked but only on availability.
- These prices are linked to the preferential event rate conditions. Payment is requested on reservation.
- No-shows are invoiced 100%. Free cancellation until 1 day before arrival.
- E-mail: info@parc-hotel.lu

Accommodation options in Luxembourg - Visit Luxembourg : www.vdl.lu/en





Excursion/visit

Optional excursion

[SES Waterwork in Koerich](#)

Contact information

ERA : secretary@radoneurope.org

DRP : rooms2023@ms.etat.lu

Tel. (+352) 247 85679

Registration, conference fee

Registration and payment at ERA website:

<https://radoneurope.org/event/rooms-2023>

50 € for ERA members/100 € for non-members



SES Waterwork (Koerich)



SYNDICAT
DES EAUX DU SUD
KOERICH



Excursion to the Syndicat des Eaux du Sud Koerich with a visit of its facilities and a presentation on how they solved their radon problem.

The Syndicat des Eaux du Sud, or SES for short, was the first inter-municipal association to be set up in Luxembourg on 8 June 1908. Its inauguration took place in 1911. Its purpose is to supply drinking water to the reservoirs of the communes belonging to the syndicate. Currently, 22 out of a total of 102 Luxembourg communes are part of the SES.



Map showing the communes supplied by the SES (dark green)



The SES network is 213 km long, including 184 km of distribution pipes. Most of the drinking water comes from the “Luxembourg Sandstone” aquifer. The water flows by natural gravity from various sources to the reservoirs of the two main pumping stations in Koerich and Dondelange. From Koerich and Dondelange, the water is pumped through pressure pipes to the main reservoir of the “Rebiërg”, which is located at an altitude of 400 metres above sea level and guarantees a certain reserve of drinking water.